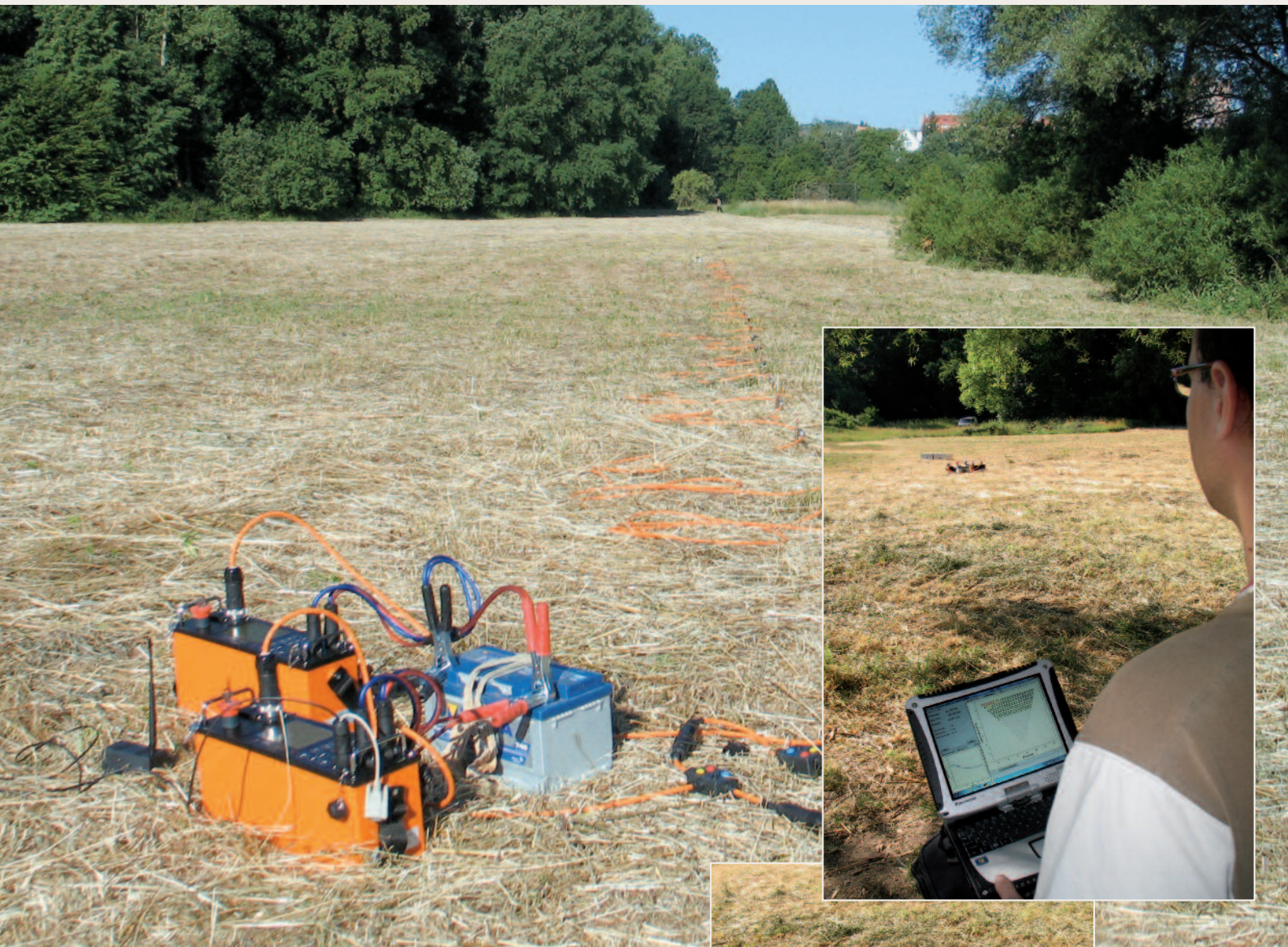


ARES II REMOTE CONTROL



**Wireless or line connection
using radio or GSM sets, RS232 or USB connection**

**High operation range of distances
from several meters to tens of kilometers (or worldwide)**

Immediate availability of all ARES II functions

**Imaging of actual apparent and model sections
during measurement (2D/3D inversion)**

Low cost accessories

Applications:

time-lapse monitoring, measurement under difficult weather conditions (rain, high/low temperature), investigation of places with limited access, survey from water level

ARES II remote control

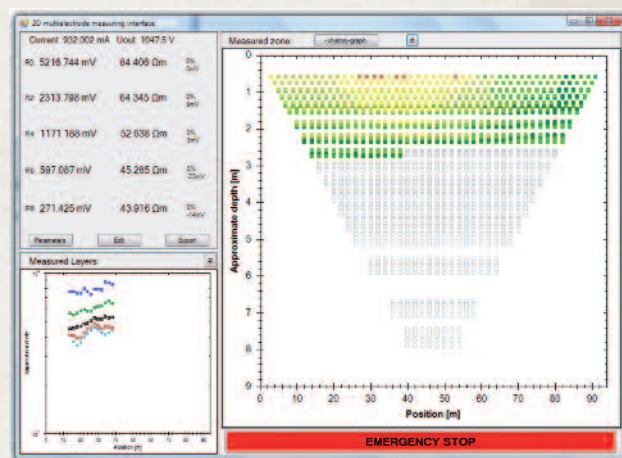
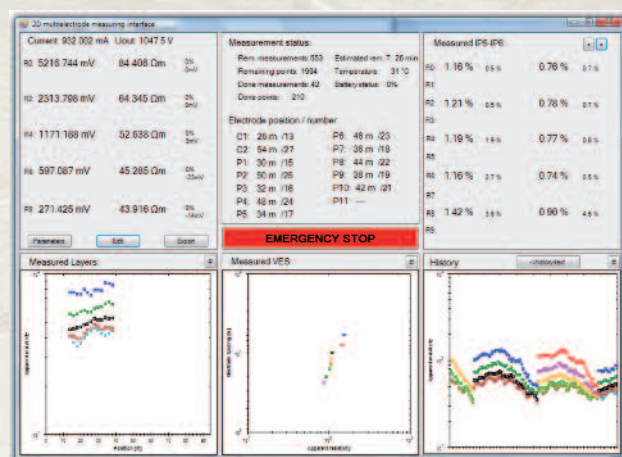
helps you in all cases where measuring conditions make the work difficult. You can operate ARES II system from a comfortable place with full access to the measuring parameters and to the actual results; it is possible to check the measured apparent / model section and to remeasure its chosen part.

Remote control support is a standard part of ARES II software. For the basic USB connection no additional cost is required.



Technical Specifications

- USB connection – distance up to 3 m (using ARES II standard accessories)
- RS232 connection – distance up to 1000 m
- radio remote control – distance up to 10 km (the real distance is determined by field conditions)
- GSM remote control – unlimited distance (local GSM coverage necessary)
- Supported operating system – MS WINDOWS
- Power supply for GSM and radio sets is provided from ARES II and computer units



Optional Accessories:

- RS232 set for remote control
- Radio set for remote control
- GSM set for remote control



Purkyňova 144, 612 00 Brno, Czech Republic
Tel.: +420 549 522 919, 916
Fax: +420 549 522 915
E-mail: info@gfinstruments.cz, www.gfinstruments.cz